



# Adhyashakti

Engineering Works



High Quality Performance

## About Us

At **Adhya Shakti Engineering** we are designing and producing precision-engineered Components, Fittings of Stainless Steel, Mild Steel, and Aluminum Alloys which have broad usage in the various industries. Our manufacturing facilities equipped with modern technology located at Ahmedabad which is also part of the booming industrial cluster in India which is helping us manufacture cost-effective products to fulfill the increasing needs of customers. As a result, we have become one of the leading manufacturers in India and competing in the international market.

We offer a range of products to help clients grow their business.

## Our Service

Manufacture various mill component based on customer requirement and customised mechanical spare parts

## Product

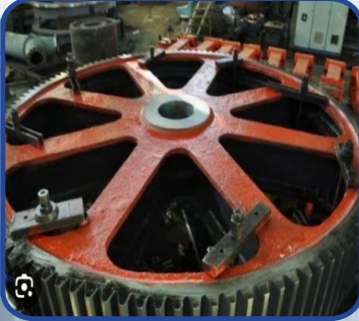
Knife	Crown pinion
Sprocket wheel	Scraper plate
Top roller	Gm bearing liner
Crown	All types of fastners
Trash beam	Worm wheel
Cs coupling	Chain
TB bracket	Hammer





# Adhyashakti

Engineering Works



## MASTER GEAR

Material Use : Cast Steel  
Size : Upto 4000 MM  
Purpose : For Speed Reduction  
Approx. Delivery Time : 8 Week

## GEAR

Material Use : Cast Steel / Cast Iron  
Size : Upto 2000 MM  
Purpose : Used in Mill Machinery  
Approx. Delivery Time : 4 Week

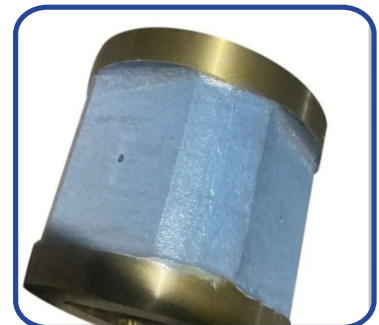


## CROWN PINION

Material Use : Cast Steel (is 2708 Gr 3b)  
Size : Upto 2000 MM With 15, 16, 17 Teeth  
Purpose : Used For Mill Running  
Approx. Delivery Time : 6 To 8 Week

## TAIL BAR COUPLING

Material Use : Cast Steel / Cast Iron  
Size : Upto 2000 MM  
Purpose : Used To Couple Both Side  
Of Crown Pinion  
Approx. Delivery Time : 4 To 6 Week



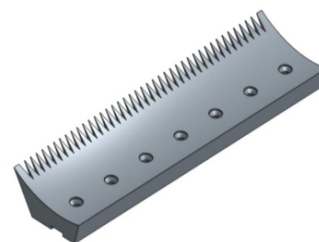


## TRASH BEAM

Material Use : Cast Steel ( Is 2708 Gr 3b)  
 Size : As Per Customer Drawing  
 Purpose : Used To Hold Trash Plate  
 Approx. Delivery Time : 6 To 8 Week

## TRASH PLATE

Material Use : Cast Steel ( Is 1030 Gr 1, 2, 3)  
 Size : Upto 2500 MM Long  
 Purpose : Used To Clean The Groove  
 Of Feed Side Roller  
 Approx. Delivery Time : 3 To 4 Week



## SCRAPER PLATE

Material Use : Cast Steel / Cast Iron  
 Size : Upto 2500 MM Long  
 Purpose : Used For Cleaning Bagasse  
 Approx. Delivery Time From Mill Roller  
 : 2 To 4 Week

## BEARING HOUSING

Material Use : Cast Steel  
 Size : As Per Mill Drawing  
 Purpose : Used For Supporting Rollers  
 Approx. Delivery Time : 6 To 8 Week





# Adhyashakti

Engineering Works

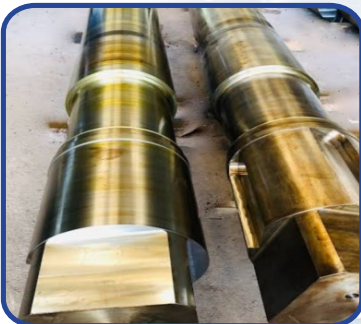


## BEARING AND BUSH

Material Use : G.M and Phosphor Bronze  
Size : As Per Customer Drawing  
Purpose : Used Either Direct Or In Support With C.S Bearing Housing  
Approx. Delivery Time : 4 To 6 Week

## SIMPLEX, DUPLEX, TRIPLEX CHAIN SPROCKET

Material Use : Cast Steel  
Size : Upto 1500 MM  
Purpose : Used For Drive Conveyor System  
Approx. Delivery Time : 4 Weeks



## FORGED SHAFT

Material Use : Forged Or Mild Steel  
Size : Upto Dia. 700 MM and 6000 MM Long  
Approx. Delivery Time : 6 To 8 Week

## CANE CHOPPER AND LEVELLER HUB

Material Use : Cast Steel  
Size : As Per Drawing  
Approx. Delivery Time : 6 To 8 Week





## Applicant

Sugar plant

Rmc plant

All machinery parts

Oil refineries

Steel rolling mill

Mining industries

Power industry

Cement industry



  
**Adhyashakti**  
Engineering Works

10, Mahadev Estate, Part-4, Nr. Ramol Police Station,  
CTM, Ahmedabad - 380026  
[adhyashaktiengineeringworks20@gmail.com](mailto:adhyashaktiengineeringworks20@gmail.com)

**GSTIN No. : 24BPDPP0641H1Z6**

**Parth Gothi ( 75674 17235 / 99797 71772 )**